



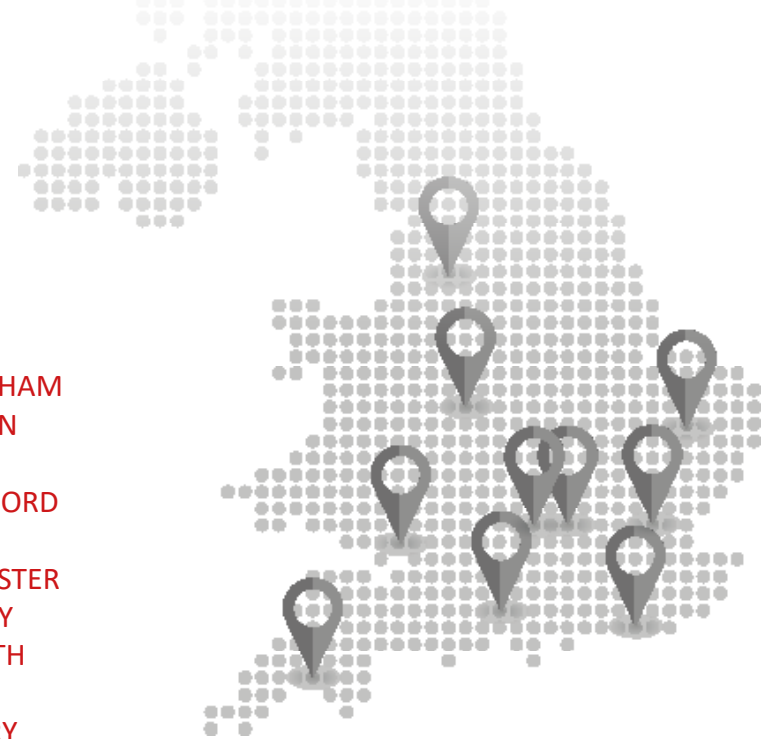
Property  
Services

# Protecting your investment from the ground up

NATIONALLY TRUSTED SERVICES DELIVERED BY INDIVIDUALS WHO CARE



[fexcopropertyservices.co.uk](http://fexcopropertyservices.co.uk)



### PROTECTING YOUR ASSETS FROM DAY 1

Although our services are provided nationally, our focus is on your property. With all supporting and administrative services provided centrally, each local, physically manned office can devote their time to you and your property's daily and long term needs.

### MAINTAINING A THRIVING AND POSITIVE COMMUNITY

We are constantly evolving our customer engagement strategy to accommodate the specific needs of residents. We build communities through timely and informative communications and via a range of tailored activities all designed to create a great place to live.



### THE EXPERIENCE TO STEER POTENTIAL ISSUES AWAY

Our depth of experience in the effective management of large scale instructions (national portfolios up to 7,000+ units) means we remain highly sensitive to any issues that may develop, and deal with them swiftly and efficiently, especially for poorly performing developments.

### AVOIDING THE RTM PITFALL

We are acutely aware of the effect a RTM situation would have on your investment. Be assured that our team of highly experienced professionals will maintain your property to the very highest of standards, reducing the risk of unsettled residents.

- BIRMINGHAM
- BRIGHTON
- CARDIFF
- CHELMSFORD
- LONDON
- MANCHESTER
- NEWBURY
- PLYMOUTH
- READING
- SALISBURY

## The strength and support only a group can offer

### NATIONAL REACH COMBINED WITH OUR REASSURING LOCAL PRESENCE

#### ABOUT THE GROUP

Our range of brands, including a prime central London brand, service the individual requirements of each client, ranging from high-end city apartment blocks, to smaller residential developments across England and Wales. Within the group, we have a brand that will suit you and your portfolio's needs.

Combined with additional supporting services from centralised teams covering H&S, HR, Compliance, Client Accounting, Legal, Company Secretarial and Communications, your investment will be fully protected.

#### HOW WE WORK

Each client has a dedicated Account Manager and team, working within a discrete set of KPI's and reporting requirements to suit you and your development, with regular account management check-ins throughout the year - because your peace of mind is important to us.

The team keep costs competitive by sourcing local contractors, and combined with our depth and experience in dealing with H&S issues, and in-house surveying and risk assessment services, we are your singular property management solution.

# Senior Management Team



**Niall McGann**  
Group CEO



**Geoff Robson**  
Managing Director  
Remus Management



**Chris March**  
Managing Director  
Crabtree Property



**Mike Brown**  
Director  
Bellharbour



**Jonathan Gough**  
Head of H&S



**Jennifer Holmes**  
Head of Marketing  
& Communications



**Terry Patch**  
Head of Client Finance  
& Administration



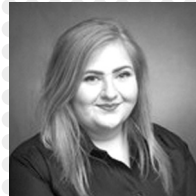
**Lorna Kassoul**  
Head of Systems  
& Projects



**Martin Chuter**  
Group Director  
Property Management



**Hilton Gray**  
Associate Director  
Property Management  
Crabtree Property



**Abbi Seaden**  
Operations Manager  
Crabtree Property



**Rob Chapman**  
Head of Legal  
& Compliance

## CONTACT:

### Lindsay Hayward

Associate Director Business Development  
lindsay.hayward@remus-mgmt.co.uk  
07851 251614

